

KVT

Split cable glands



1

Product description

KVT is a circular split frame for quick and easy installation and sealing of cables or complete cable harnesses.

Polyamide locknuts are included in the shipment.

For routing D-Sub, DVI or PROFIBUS connectors in combination with the split cable glands KVT, special locknuts with cut-outs are required.

Locknuts

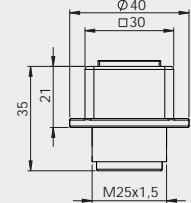
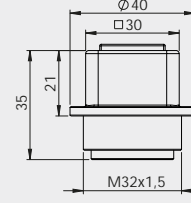
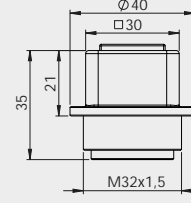
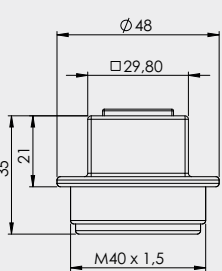
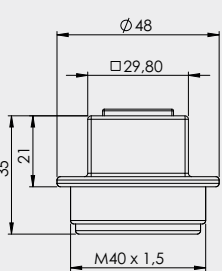
Locknuts with special cut-outs are available separately. The cut-out dimensions are listed on page 144.



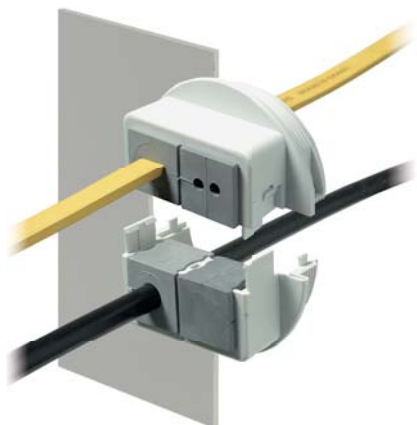
KGM-SUB-D9 fits D-Sub 9 connectors
(Required wall cut-out: \varnothing 36 mm, PU: 10)
 Order No. 45105 Order No. 45106

KGM-PB fits DVI and PROFIBUS connectors
(Required wall cut-out: \varnothing 42 mm, PU: 10)
 Order No. 45107 Order No. 45109

KGM-SUB-D25 fits SUB-D25 connectors
(Required wall cut-out: \varnothing 50 mm, PU: 10)
 Order No. 45108 Order No. 45110

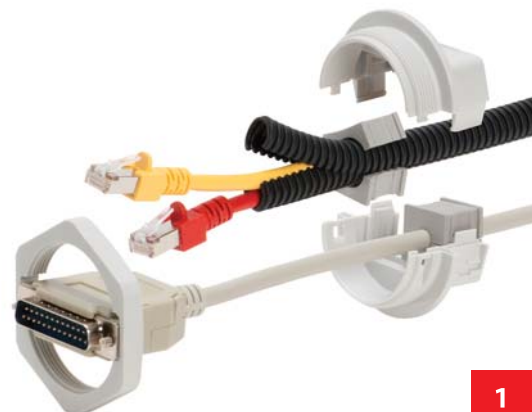
Description	Type	Order No.	Inserts KT small large	Thread Thread length	PU
	KVT 25**	<input type="checkbox"/> 45035 <input type="checkbox"/> 45025	1 -	M25 x 1.5 Length: 14 mm	10
	KVT 32	<input type="checkbox"/> 45036 <input type="checkbox"/> 45026	1 -	M32 x 1.5 Length: 14 mm	10
	KVT 32 + KGM-SUB-D9	<input type="checkbox"/> 45037 <input type="checkbox"/> 45027	1 -	M32 x 1.5 Length: 14 mm	10
	KVT 40	<input type="checkbox"/> 45203 <input type="checkbox"/> 45028	1 -	M40 x 1.5 Length: 14 mm	10
	KVT 40 + KGM-PB	<input type="checkbox"/> 45205 <input type="checkbox"/> 45029	1 -	M40 x 1.5 Length: 14 mm	10

* Only valid for grey product types
 ** Max. cable diameter of 15 mm



KVT

Split cable glands



1

Type	Order No.	Inserts KT small large	Thread Thread length	PU	Description
------	-----------	--------------------------	----------------------	----	-------------

KVT 50 2	<input type="checkbox"/> 45204 <input type="checkbox"/> 45030	2 -	M50 × 1,5 Length: 14 mm	5	
KVT 50 2 + KGM-SUB-D25	<input type="checkbox"/> 45206 <input type="checkbox"/> 45031	2 -	M50 × 1,5 Length: 14 mm	5	
KVT 63 1 + GM 63 **	<input type="checkbox"/> 45211 <input type="checkbox"/> 45111	- 1	M63 × 1,5 Length: 14 mm	5	
KVT 63 4 + GM 63 **	<input type="checkbox"/> 45214 <input type="checkbox"/> 45114	4 -	M63 × 1,5 Length: 14 mm	5	

Advantages

- Insertion of pre-terminated cables
- Warranty on pre-terminated cables remains
- Retrofitting and maintenance can be carried out easily and quickly
- High packing density, wide variety of inserts
- Suitable for standard or metric cut-outs
- Polyamide locknuts are included in the shipment



Specification

Material	Polycarbonate (PC)
Colour	<input type="checkbox"/> grey (similar RAL 7035) <input type="checkbox"/> black
Flame class	UL94-Vo, self-extinguishing
Protection class	IP54, with gasket and correct selection of the cable inserts (certified according to DIN EN 60529:2000-09)
Temperature	- 30°C to + 100°C (static)
Properties	Halogen free, silicone free
Cut-out dimension	Metric standard sizes

Accessories

KT Cable inserts	Page 30 - 34
KVT-EMC Brackets	Page 111
Locknuts	Page 144

* Only valid for grey product types
 ** Locknut GM 63 (nickel plated brass) is included in delivery

KVT-EMC

EMC bracket for cable glands



Type	Order No.	Shield diameter	PU
KVT-EMC-25 SKL 1.5-3	37180.1	1.5 - 3 mm	5
KVT-EMC-25 SKL 3-6	37180.2	3 - 6 mm	5
KVT-EMC-25 SKL 6-8	37180.3	6 - 8 mm	5
KVT-EMC-25 SKL 8-11	37180.4	8 - 11 mm	5
KVT-EMC-32 SKL 1.5-3	37181.1	1.5 - 3 mm	5
KVT-EMC-32 SKL 3-6	37181.2	3 - 6 mm	5
KVT-EMC-32 SKL 6-8	37181.3	6 - 8 mm	5
KVT-EMC-32 SKL 8-11	37181.4	8 - 11 mm	5

Product description

The KVT-EMC brackets in combination with the split cable glands KVT and QVT combine routing, EMC shielding and strain relief. The connection to the earth potential is possible via the cabinet wall or an earthing tape.

Cables pass through the split cable glands and insert directly into the EMC clamps.

Separate functions according to regulations – carried out quickly and easily!

Advantages

- Simple and tool free assembly
- Optimal contact of the cable shield
- Subsequent assembly possible
- Additional M5 hole for earthing tape

Specification

Material Sheet steel, zinc plated

Fits with

KVT Split cable glands Page 24 - 25
 QVT Split cable glands Page 44